

WATERBEACH COMMUNITY ASSOCIATION

# Beach News

WATERBEACH - LANDBEACH - CHITTERING

*Summer 2019*

*No.259*





**W**ATERBEACH  
**T**HEATRE  
**C**OMPANY

*Love theatre, love Waterbeach Theatre Company!*

*noda*  
Be inspired by amateur theatre



**Events**

**SOCIAL**



Multi award winning  
theatre group

**WHETHER YOU ARE  
INTERESTED IN:  
ACTING, SINGING, DANCING,  
WORKING BACK STAGE OR  
WITH COSTUMES, HAIR AND  
MAKE UP, WHETHER YOU ARE  
8 YEARS OR 80 YEARS OLD  
YOU ARE VERY  
WELCOME!**



**COME  
AND  
JOIN  
WTC**



VISIT OUR WEBSITE AT [WWW.WTCONLINE.ORG.UK](http://WWW.WTCONLINE.ORG.UK) EMAIL: [SECRETARY.WTC@ICLOUD.COM](mailto:SECRETARY.WTC@ICLOUD.COM)  
LIKE US ON FACEBOOK: @WATERBEACHDRAMA FOLLOW US ON TWITTER @WATERBEACHTHCO

# BEACH NEWS

Journal of Waterbeach Community Association  
[www.waterbeach.org](http://www.waterbeach.org)



'Beach News' is edited and distributed entirely by non-professional volunteers and is delivered free to residents of Waterbeach, Landbeach and Chittering four times a year.

The Association welcomes contributions on subjects of local interest but reserves the right to edit or omit articles without notice at their discretion.

Whilst every effort to ensure contents are correct on going to print the Association cannot accept responsibility for any omissions or errors.

Views expressed in articles are not necessarily those of the Association and we have no control over the nature, content and availability of any website or link referred to.

Articles for inclusion in 'Beach News' should be emailed to  
**[beachnews@waterbeach.org](mailto:beachnews@waterbeach.org)**

Advertisements published in 'Beach News' are subject to individual agreements between advertisers and readers and the Association cannot be held responsible for the quality of goods or services supplied.

Please refer any problems with advertisers to  
Jacqui Rabbett 01223 860993.

The nature of production makes publication dates uncertain but editions should appear as follows:

No. 260 (Autumn) 21<sup>st</sup> September 2019 – copy by 30<sup>th</sup> August 2019

No. 261 (Winter) 7<sup>th</sup> December 2019 – copy by 15<sup>th</sup> November 2019

*Whilst every effort will be made to adhere to this schedule unforeseen circumstances may delay or restrict publication or delivery and no responsibility can be accepted for late or non-appearance.*

## WHERE TO SEND YOUR ARTICLE

If you would like information on your group to be published in Beach News, or have some interesting news to share, write an article and send it along. Email it to **[beachnews@waterbeach.org](mailto:beachnews@waterbeach.org)** or send it to 5 Spurgeons Ave, Waterbeach, Cambridge CB25 9NU.

If you have posters detailing one off local events that you would like put up in the Associations notice boards at Waterbeach Green and School entrances on High Street and Way Lane, please post three copies to 5 Spurgeons Avenue, Waterbeach, Cambridge CB25 9NU (Maximum size poster A4 in portrait format).



## Contents

Community Association	1	Waterbeach School 50 years ago	17
Community Land Trust	3	Beach Social Club	18
Library News	4	District Councillor Update	19
Waterbeach Repair Cafe	5	Our Vanishing History	20
Community Playgroup	6	Waterbeach Yard Sales	20
Gardening Club	7	Feast Past	21
Waterbeach United Charities	7	Farmland Museum	22
Waterbeach School	8	Cambridgeshire Hearing Help	23
Waterbeach Cricket Club	9	Military Heritage Museum	24
Waterbeach United Charities	9	Amey Waterbeach	25
Keep Waterbeach Rural	10	Wag Your Tails!	26
Toddler Playgroup	11	Waterbeach Colts FC	27
Summer at the Beach	12	Poor Mobile Signal	27
Waterbeach Theatre Company	13	Tithe Barn Trust	28
Happy Folks Club	13	Fen Edge Festival	29
WASPS	14	Bufs (Royal Antediluvian Order of Buffaloes)	30
Neighbourhood Plan	15	Cambridge Open Studios	31
Beach Bowls Club	16	Fire and Rescue Service	32
Waterbeach WI	16		

# Community Association



## ***Waterbeach Feast Day 2019, Saturday 8<sup>th</sup> June***

For those of you new to Waterbeach, Feast Day is an annual event organised by Waterbeach Community Association. It starts with a parade of floats around the village, mostly entered by local groups and organisations. The afternoon entertainment then continues with a variety of stalls and side shows on the village Green and some exciting events and displays in the arena. Feast Day is always a wonderful village event with everyone turning out to make it enjoyable for both villagers and visitors.

This year's Feast Day preparations are almost complete. Arena events, fairground rides, pony rides, stalls, a children's entertainer, food stands and much more are all booked.

We will be continuing with the alphabet

theme and this year will be 'Something beginning with M.....'

The parade will this year gather on the grass at the front of the school and start its procession around the village at 2pm.

Please help on Feast Day by not parking or driving through the village between 1.45pm and 2.45pm.

Traffic cones will be put out on Saturday morning on the High Street, Greenside, Chapel Street, St. Andrew's Hill, Way Lane and Cattells Lane.





Please do not remove the cones or park in between, they are there to aid the movement of the parade around the village and for the safety of the participants, and people watching the parade. Thank you.

You can still join in with the parade and it's free to enter. The various



categories are Adult, Under Fives, Junior, Friends and Family or individuals. To join in go to our website where you will find the entry form. [www.waterbeach.org](http://www.waterbeach.org)

Or if you may still be thinking about booking a pitch on the Green there is still time. Just go to the web site [www.waterbeach.org](http://www.waterbeach.org) and send your completed paperwork to me, all the

information is on the booking form.

To ensure the success of Feast Day we still need assistance with the organisation of the day, and help on the day itself, Saturday 8<sup>th</sup> June 2019. We are always short of volunteers to assist with the setting up and clearing away.

We also need people to volunteer to be marshals and walk alongside the parade as it makes its procession around the village. We have all the high-vis jackets and the collection buckets you will need.

This year the chosen charity who will benefit from the Feast Day collection is Cambridgeshire Hearing Help. You can find out more about their work on page 23.

If you would like to donate a prize to the Feast Raffle please bring your donation to the Community Association tent on the Green on Feast Day or contact me.

If you can help in any way please give me a ring on 01223 860993 or e-mail me at [jacquirab@btinternet.com](mailto:jacquirab@btinternet.com)

Thank you for your continued support for Waterbeach Feast Day. We all hope you enjoy the day.

*Jacqui Rabbett - Chairperson*

### **Beach News**

The Beach News is delivered to homes in Waterbeach, Landbeach and Chittering by a willing team of volunteers. Our deliverers vary in age from 0 - 90 years old! Yes, we have a lady who delivers at the age of 90 and our newest recruit was born in December 2018. Alasdair was out delivering the spring edition in March with his parents Rick and Frances Chalton, although they said he wasn't much help!!



# Community Land Trust



We continue to make progress following our recent incorporation. We have appeared at the recent Neighbourhood Forums which have been organised by South Cambs District Council. These offer a great opportunity to talk to local people about why we think genuinely affordable homes are important, but also to see Planners, Councillors and Developers and have the opportunity to talk to them about how we can help achieve benefit for the Community.

We are planning our appearance at the Waterbeach Feast in June. We hope to be able to talk to lots of local people about what they would like to see from genuinely affordable homes and community facilities. Conversations are important and we have been talking to lots of people and groups about things like self-build, community facilities, quality of homes, and genuinely affordable homes.

We were also pleased to see the Graven Hill development featured on Grand Designs: The Street. This is the largest self-build development in the country. We think it's really important to get people and communities involved in designing and building their own homes, which is why we want the whole community involved. And you don't have to actually do the manual work yourself. This is something which we are really keen to explore.

As we progress with looking for a project, we want it to be truly Community led. We want to start asking questions and for the Community to tell us why things are important. Things like...

What does affordable mean to you?

Why are local affordable homes important to you?

What local facilities would you like to see?

Do you like the homes on offer from housebuilders and why?

What is important to you about a home? (Size, Rooms, Feel, Finish Quality, Ceiling Height, Energy Efficiency, Private or Shared Outdoor Space, Quiet, Daylight, Privacy, Community, Location, Work, Amenities)

Please tell us what you think, either at the email below or our survey at [www.waterbeachclt.co.uk/survey](http://www.waterbeachclt.co.uk/survey) or talk to us at the Waterbeach Feast.

We are always keen to sign up new members so you can have your say in how we work. You can do this at [www.waterbeachclt.co.uk/signup](http://www.waterbeachclt.co.uk/signup) for only £1.

***Tell us if you need a home!***

Most importantly we continue to gather Expressions of Interest for those in need of a home. If this is you, or you know someone who has had to move away, then please fill in the form at [www.waterbeachclt.co.uk/looking-for-a-home](http://www.waterbeachclt.co.uk/looking-for-a-home). The more people who tell us, the better evidence we have for the Council of real need.

*Ian Bracey and Waterbeach CLT Trustees [info@waterbeachclt.co.uk](mailto:info@waterbeachclt.co.uk)*

# Library News



Whilst we have had to encounter some adjustments of late on the School site, due to the extensive building work, Waterbeach Independent Library continues to offer over 10,000 books of all types to Waterbeach Community, and the surrounding area, covering every possible subject for children, and adults.

There is a Children's Area containing fiction and non-fiction, from board books suitable for babies, a wide reading scheme selection, plus stories from all the well known children's authors. The children's Non-Fiction section offers project material for school assignments, all of which can be explored within a safe environment. The Library offers sets of Phonic books to assist parents helping their child to learn to read, which compliment the system taught within schools, along with books explaining the method being utilised.

Our Adult area consists of up to date Fiction books, from a wide range of popular authors, and should we not have the particular book you require we can invariably obtain it for you, or you can request the book from Cambridgeshire County Libraries and collect it from Waterbeach Library, usually within a week. Any Cambridgeshire Library books borrowed from other Libraries in Cambridgeshire can be returned to Waterbeach Library. Whilst we are an Independent Community Library, operated solely by Volunteers, we are affiliated to Cambridgeshire Libraries, utilising their computers and resources.

We will be advising, via our Library Facebook Page, details of the Summer Reading Challenge very soon. This year it is "Space Race", which runs throughout the School Summer vacation period, launched two weeks before end of the Summer term.

This is a nationwide scheme to encourage children to continue reading throughout the school holidays, as many children can experience a drop in their reading abilities over this period. We have already purchased new books of all genres which we are sure the children will enjoy. The importance of being able to read cannot be emphasised enough. The skill of reading is a child's passport to the world beyond, it inspires confidence which flows over and into everything the child is connected to in their lives.

The only stipulation for the Summer Reading Challenge is the child must have their own Library card, between the ages of 3 years to 13 years old, read six books, borrowed from the Library, of their own choosing, throughout the holiday season to complete the Challenge. Every book completed brings a reward in the form of a variety of incentives to keep children interested, and



focussed. On completion the children are presented with a Diploma and medal, usually in School Assembly, in front of their peers. If your child does not have a Library card just ask in the Library and we will supply you with a card, the only requirement being proof of residency e.g. - a utility bill, ID card, or letter displaying your address.

Being able to read provides a passport to the future for your child, the Library can assist you with this aim, together we can open the window on the world which literacy provides.

Whilst building work continues the Library is open - Monday 3-5pm, Wednesday 3-5pm, Wednesday 6-8pm, Friday 3-5.30pm, Saturday 10-12noon. We are located on the School Site down the driveway.

At the present time the parking is severely restricted, but there is a designated Disabled Library Only parking space available.

We are a friendly bunch of people, we hope to see you in the future.

## Waterbeach Repair Café

When: Saturday 13 July 2019, 11a.m. until 2p.m

Where: Community Room, Waterbeach Barracks

The Waterbeach Repair Café will be held again this year as part of the Summer at the Beach Open Studios event. Things we are hoping to be able to repair include bicycles, clothing in need of repair, small electrical or electronic appliances, lamps, toys, laptops, printers, items that need gluing, jewellery that needs a clean/repair etc.

If something breaks between now and 13 July don't throw it away, hang on to it and bring it along. Generally, we advise people to book their items in for repair. Send an email to [waterbeach@repaircafe.org.uk](mailto:waterbeach@repaircafe.org.uk) to book your item in. We'll reply asking for some details.

If you don't have anything to repair come along anyway to see the fantastic local artists and their work or have a coffee or cake at Karen's wonderful café.

For those not familiar with repair cafés here are some details:

Repair Cafés are community events that match people who need stuff fixed with people who like fixing things. The international Repair Café movement kicked off in Amsterdam and now there are over a thousand Repair Cafés around the world covering most continents.

Repair Cafés are completely non-commercial. There are no promises and no guarantees, but if something can be saved the repairers will give it their best efforts. Repairers are always keen to teach you how to do the repair – or at least have you watch while they do it.

# Community Playgroup



As the weather warms up the children have been spending more and more time outdoors. We have added lots of exciting numeracy and literacy resources to the garden recently, stored in new purpose-built sheds which allow the children to find writing and counting equipment as they play. Clipboards, pens, paper, measuring sticks, beakers, counting pots and story stones are all being used in fantastic imaginative play, helping the children to develop important skills whilst having fun.

We have also really enjoyed using real building tools including hammers, screwdrivers, spirit levels, nails and screws. The children put on their safety goggles and had great fun hammering nails into logs and pulling them out with pliers. They had to listen carefully to the staff's safety instructions and remember the rules so that they kept both themselves and other children safe. It is also a great way to develop fine motor and problem-solving skills. Whilst all this was happening in the garden, inside the Playhouse all ten of our hen's eggs hatched successfully this year and the children saw several



of them hatch during sessions. They really enjoyed finding names for each chick then watching them fluff up and grow in their brooder. The children also learned how to handle the chicks safely and how to feed them and keep them healthy. After a couple of weeks the chicks found a new home locally.

Finally, at the end of March we had our Ofsted inspection and are delighted that we have retained our "Good" rating. If you would like to read the inspector's report, you can find it online at <https://reports.ofsted.gov.uk/>

We are open from 9am to 3pm daily during term time and are rated "Good" by Ofsted. We take children from their 2nd birthday. 15 hours government funding is available to all 3 and 4 year olds and to qualifying 2 year olds. We also offer 30 funded hours to qualifying families. We are situated in the primary school grounds in the centre of Waterbeach. Supporting our play-based learning, we offer weekly Forest School sessions, regular visits to Waterbeach Library and the school gym and optional French lessons. Please look at our website and diary at [www.waterbeachplaygroup.org.uk](http://www.waterbeachplaygroup.org.uk) to find out more.

We are now taking bookings for September 2019 (we do have some limited availability for Summer 2019 too and are happy to wait list if we are not able to give you the sessions that you are looking for straight away). If you would like to come and see what we do, please call Jacqui Woods on 01223 440769 (term time) or email us at [info@waterbeachplaygroup.org.uk](mailto:info@waterbeachplaygroup.org.uk) for a Prospectus and application form.

# Gardening Club



The Gardening Club is taking its summer break from the programme of talks to focus on social events and outings (and working hard on our own gardens and allotments). We concluded with three entertaining talks by Margaret Nimmo-Smith on ferns, Paula Dyason on daylilies and Szusza Serer on herbs. Our speakers often bring plants for sale and members and visitors take the opportunity to buy unusual new plants at very reasonable prices. We have also enjoyed a spring visit to the gardens of Wolfson College where we were treated to an excellent guided tour by the Head Gardener.

We are looking forward to meeting many villagers on Feast Day when we will be selling a wide variety of plants and are very grateful to the Community Association who give the opportunity to the village to come together for a wonderful social occasion. Please take the opportunity to buy bedding plants, perennials and vegetables from us and learn about our plans for the Annual Show in September.

We are working hard with our partners in the WI to plan the Annual Show which will be held at the church on September 14<sup>th</sup>. Schedules will be available at the Feast and, later, from local shops. We would like to encourage you to enter some of the vegetable, flower, flower arrangement, art and craft and domestic classes. There are special classes for children, too.

Let's hope that 2019 is a good growing season! See you at the Feast and the Annual Show.

## Waterbeach United Charities (Reg No 201528)

Waterbeach United Charities provide financial support or pays for services that help to alleviate individuals who are "in need or distress" who are residents of Waterbeach Parish.

**Electric Wheelchairs** - We have a number of electric wheelchairs for those in need. If you would like to be considered please let us know.

**Distress Grants** -The Trustees would like to hear from individuals who may be IN NEED OR DISTRESS. If you think we could help, and to find out whether you are eligible for assistance, whether it be loaning equipment to you, or providing financial support, please contact:

All personal applications are confidential.

Mrs S Wilkin, The Secretary, Waterbeach United Charities  
25 Payton Way, Waterbeach, Cambridge CB25 9NS  
Email: [waterbeachunitedcharities@gmail.com](mailto:waterbeachunitedcharities@gmail.com)



# Waterbeach School

We have had a very busy Spring Term. Our children have worked hard in their studies and have taken part in a number of trips and performances. The School Council have developed a new Etiquette code for the dining room and our very youngest children have hatched some chicks as part of their work on Farms.

I am sure that many of you are familiar with the developments at the school. The foundations are now in place and things have now started to move very quickly with



the  
steels  
arriving  
during  
the  
Easter



holidays and the shape of the new building becoming much clearer.

Alongside this work, there is a lot of developments happening inside the school and so the staff team has had to take on board a number of changes in routine. The team is very clear that, although this is inconvenient at the moment, it is not forever and we are all very

excited about what is to come.

I am very aware that some of this inconvenience may extend to aspects of the school grounds that may be used by the public as well as our children. I ask everyone to please have patience and understand that this is just for one year and everything should be completed this time next year.

The Governors have also been involved in school, helping with safeguarding audits, interviews and strategy meetings, as well as the usual committee meetings. Most of them have come into school to visit and are an important part of our team. I am grateful to them for the time that they give voluntarily.

The school continues to move forward, with staff working on updating the curriculum, assessment and resources. We are currently involved in recruiting for September, with three staff leaving us in July and an extra class opening in September. It is a continually developing place which makes it both an exciting and caring environment to work in. *Miss J Green - Headteacher*

# Waterbeach Cricket Club

Welcome to spring, long evenings of sunshine and fresh air, the sound of leather on willow and the new cricket season. Are you interested in cricket? If so Waterbeach Cricket Club are your local village cricket team. We play in the Cambridge Business House League Division 4, which is a 15 over midweek competition with an emphasis on everyone taking part. We play most of our games at home on the Waterbeach Recreation Ground on Wednesdays at 6pm. Along with the 6 league games we also have 7 or more midweek and Sunday friendlies. A trip to the local pub for drinks and chat after the game is a good way to finish the evening and make some new friends.

We are a friendly inclusive club keen to encourage new members of all ability, age and gender. Our casual fixture list is ideal for people who want to play but don't want the commitment of playing every weekend for the whole summer. Whether you are new to the area, played when you were younger but haven't played for a while or just fancy something new, then get in touch and get involved. This year we have a new Facebook page (<facebook@waterbeachcricket>) where we will update fixtures, match reports and general club gossip. To get in touch e-mail [waterbeachcricketclub@gmail.com](mailto:waterbeachcricketclub@gmail.com) leave a message on the Facebook page or give me a ring (Al on 07791786040). I look forward to hearing from you and joining you out in the middle.

# Waterbeach United Charities (Reg No 201528)

Waterbeach United Charities invite applications from individual students who might benefit from some help with their studies. We consider grants for equipment for students undertaking vocational training, tools, clothing, books etc; or grants for students who may appreciate help with the costs of books. We also consider applications for help with travel costs.

Students Grants are only awarded once a year, in September and applications need to be made by **1 September 2019**. No applications will be considered after this date. The trustees will consider all applications at a meeting in early September. If you think we may be able to help please complete an application form, obtainable by writing to the address below. We will acknowledge your letter and send you an application form.

All personal applications are confidential.

Mrs S E Wilkin, The Secretary, Waterbeach United Charities  
25 Payton Way, Waterbeach, Cambridge, CB25 9NS  
Email: [waterbeachunitedcharities@gmail.com](mailto:waterbeachunitedcharities@gmail.com)

# Keep Waterbeach Rural

I am writing at a time of great change for our Parish, communities and environment. The Local Plan has been approved and a Supplementary Planning Document has been adopted by South Cambs District Councillors to progress the proposed Waterbeach New Town of approximately 33,000 people living and working here. It will be the combined population of Newmarket and Ely. The idea is for high densification which will mean many high storey buildings to achieve this. There are two developers of the New Town, Urban & Civic on the barracks land and RLW Estates on adjoining greenfield land. There are issues of land access which could have major consequences for the Parish if legal obligations are not agreed and met by the two developers for the infrastructure that will be required. Both developers are now in the process of applying for planning permission on their respective land. Objections have been made to South Cambs on environmental issues by the Environment Agency, Natural England and Heritage England. East Cambs District Council have a holding objection regarding the implications of the New Town on the already congested A10.



The eventual closure of Waterbeach station and relocation to the North of Bannold Road has been granted full planning permission by South Cambs District Council. The current station platforms will be extended later this year to accommodate eight car trains because of the huge increase of passenger numbers coming from the Ely area.

The application to build a massive incinerator at the Waste Management Park to the North of Waterbeach by Amey which was refused in September 2018 by Cambridgeshire County Councillors due to the visual impact on Denny Abbey and surrounding landscape has gone to appeal. It will now be for the Secretary of State to make the final decision.

Anglian Water have submitted in their business plan for the next five years a sewage works to serve the New Town which is likely to be built on RLW Estates greenfield land to the North of Bottisham Lock East of Long Drove. The decision is expected later this year.

Our village is a wonderful place to live and all that I have mentioned needs to be seriously addressed and considered by all decision makers, elected representatives and those who stand to profit from the development. It cannot be purely economy driven. It cannot be profit over community and environment.

Keep Waterbeach Rural is on Facebook

*Jane M Williams*



# Toddler Playgroup



We would like to say a huge 'Thank You' to everyone that supported our fundraising events last term. Our Auction of Promises was held on Thursday 28<sup>th</sup> March, at The White Horse. This was a great evening, and it was good to see so many people coming out to support us and bid on the variety of lots on offer. Thank you to everyone who donated to the event or those of you who came along and were bidding on the night. Special thanks to The White Horse for allowing us to hold the auction there again, and also to David Palmer, the auctioneer, for giving his time to help us raise a fantastic £2,220 on the night. Two days later, we were busy on the Green with our Mother's Day Cake and Flower Stall. Thank you to everyone who supported the stall on this day. Special thanks to Scotsdales Garden Centre in Horningsea for donating the daffodil pots. We hope all the Mums in the village enjoyed their treats; we raised a fantastic £378.

As we start the summer term, it looks set to be busy one yet again. Our Rising 5 children will soon be starting their transition activities as they move on to 'Big School'. Hopefully the warm weather that we enjoyed over the Easter break will continue as the term continues, meaning that we will be able to enjoy lots of fun activities outside.

We're busy getting prepared for Feast Day, make sure to look out for us in the parade and our stall on the day. We also have some other fundraising events due to take place in the coming weeks. By the time this is published, we would have held the Waterbeach Running Festival, which has become our biggest fundraising event over the last few years. We will also be having a cake stall at the Colts Football Festival on the Saturday morning, and another cake stall at the Waterbeach Dog Show, as well as our Feast Day stall. Please pop along to any of our events and support us.

There are still some spaces available at playgroup for children aged 2 ½ years – school age, during term time only. We will be having an Open Morning on Monday 17<sup>th</sup> June, 9.30-11.30. This is a great opportunity for prospective children, parents and carers to come and have a look around and to see a session in progress. Staff will be available to answer any questions you may have, and provide you with lots of information about what we have to offer. From the term after a child turns 3 years old, they're eligible to 15 hours government funded.

If you would like any further information on what we have to offer at Waterbeach Toddler Playgroup please visit our website

[www.waterbeachtoddlerplaygroup.org.uk](http://www.waterbeachtoddlerplaygroup.org.uk), email

[waterbeachtoddlerplaygroup@outlook.com](mailto:waterbeachtoddlerplaygroup@outlook.com) or call 07808357729. Alternatively feel free to call into one of our sessions and speak to a member of staff.

# Summer at the Beach

Summer at the Beach  
Arts Festival

Summer at the Beach 2019 would like to welcome everyone to our fourth year of arts events at the historical Waterbeach Barracks site. This year as well as the usual exhibition of painting, ceramics, photography, millinery and sculpture we have the added attractions of a 'Love Waterbeach' event on the 29<sup>th</sup> of June featuring amazing images of the village and music (programmed by Beach Sessions) at Waterbeach Baptist Chapel, a repair cafe, book swaps, live graffiti art and a workshop by the internationally famous street artist Irony, film screening and talks by writers and artists [to name but a few]. We also have the 'Pop Up Café' [probably the best cafe in Cambridgeshire] in residence for three weekends and a gaming room with vintage consoles.



In line with our belief that culture is for everyone, all the activities are free entry and you can drop in any time and visit as often as you like. So, get inspired and come along this June and July to see the wide range of arts created by local artists, musicians and writers.

Details of the programme, times, dates and locations can be found on our website at [www.summeratthebeach.co.uk](http://www.summeratthebeach.co.uk) and on our 'A Day at the Beach' Facebook page.

Information about participating artists can be found on the Cambridge Open Studios website [www.camopenstudios.co.uk/open-studios/964](http://www.camopenstudios.co.uk/open-studios/964)

The exhibition will be open on the weekends of July 6<sup>th</sup> 7<sup>th</sup>, 13<sup>th</sup>/14<sup>th</sup>, 20<sup>th</sup> /21<sup>st</sup> from 11am – 6pm and will be signposted from the Barracks main entrance.

# Waterbeach Theatre Company

By the time you read this edition's update we will be about to embark on our final performance of *Hi-de-Hi!* If you came along to join us we hope you enjoyed the experience. We certainly had a lot of fun and will be sad to leave Maplin's.



Next up on 3 June, is auditions for our November production which is *The Diary of Anne Frank* by Frances Goodrich and Albert Hackett.

An impassioned drama about the lives of eight people hiding from the Nazis in a concealed storage attic, the play captures the claustrophobic realities of their daily existence. In this powerful play Anne Frank emerges from history a living, intensely gifted young girl, who confronts her rapidly changing life and the increasing horror of her time with honesty, wit and determination.

**Auditions:** Monday 3 June at 7.30pm at Waterbeach School  
(Performances: 6 - 9 November).

On 7 June we will be having our usual Tombola Stall at the Waterbeach Feast. Do come along to say hello and support both WTC and other local groups and societies.

All Members of WTC hope you enjoy the summer holidays and look forward to seeing you for *The Diary of Anne Frank* between 6 and 9 November.

Advance Notice: our pantomime in January 2020 will be *Snow White*. More news next time.

You can find out all about Waterbeach Theatre Company by visiting our website [www.wtconline.org.uk](http://www.wtconline.org.uk)

## Happy Folks Club

Summer will soon be here, the temperature is rising and we are looking forward to our upcoming events. We have already been to Milton Keynes, to see the show Bodyguard, a fabulous show, though a bit noisy at the start! Wroxham and a 2 hour broads cruise, always a popular trip. We have coastal trips arranged, as well as a Cockney Knees Up Party at the Royal Albert Docks. Before that there is of course Feast Day. Look out for our stall on the Green! Our membership remains strong and we enjoy our Friday afternoons at the Beach Club. We have auctions every week, and a raffle now and again to raise money. This helps us keep the coach trips reasonably priced. We have a brand new coach, driven by Elaine our own dedicated driver, one of the family she say! So bring on the sunshine, we are ready! Hope you enjoy your summer as much as we will ours.



# WASPS



The recent WASPS Holiday Club over the Easter break was enjoyed by the children attending, the children particularly enjoyed local trips out into the community, including trips to the park and recreation ground.

The children are looking forward to enjoying the nicer weather that we are hoping the summer term will offer, allowing even more play opportunities outside, which the children love! We are very lucky at the Playhouse to have a good amount of play space on offer, including an all year-round artificial grassed area and a play structure providing the children with extra challenges in sliding, climbing and swinging... and hanging up-side down! We also have plenty of space for running, ball games and imaginary play and areas/trays for exploring with sand/water and messy play too! At the front of the building there is garden area, the children have enjoyed some growing activities and gardening activities at the club too.

Will your child be starting school in September? If you are interested in using WASPS for childcare, please get in touch soon so we can let you know what availability we have. We are currently liaising with our current families to confirm their bookings for the next academic year.

Do you have relevant skills and experience to share regarding childcare? Personnel experience? Building maintenance knowledge? Do you have connections to WASPS or are you interested in supporting the club? If so, we would love to hear from you! We are a charity run by a small committee of parents/carers and are always keen to recruit more helpers. We are also hoping to recruit some more bank staff too, to help out at the club as and when needed – for more information, please get in touch. WASPS are committed to safeguarding the children in our care, all positions, staff and committee are subject to DBS checks and we follow safer recruitment procedures.

***Holiday Club*** - Our next Holiday Club will run during May Half Term and on the training day, Tues 28<sup>th</sup> to Fri 31<sup>st</sup> May, and Mon 3<sup>rd</sup> June. The planned Summer Holiday Club dates are as follows, Thurs 25<sup>th</sup> to Fri 26<sup>th</sup> July, Mon 29<sup>th</sup> July to Fri 2<sup>nd</sup> Aug, Mon 5<sup>th</sup> to Fri 9<sup>th</sup> Aug, Mon 12<sup>th</sup> to Wed 14<sup>th</sup> Aug. The Holiday Club will also run on the September training days, Mon 2<sup>nd</sup> and Tues 3<sup>rd</sup>. The club is open to 4-11 year olds, 8 a.m. – 6 p.m. for a full day. We also offer flexible booking with half day sessions and bookings for a minimum of 2 hours. Half day sessions can also be extended on an hourly basis and a sibling discount is available. Snacks and drinks are provided throughout the

day, but a packed lunch is required from home please. Bookings must be made in advance and families must be registered with WASPS.

For future holiday club dates please refer to our website.

**Breakfast Club** runs from 7:45 a.m. – 8:50 a.m. and **After School Club** runs until 6 p.m. on all school days. Please inquire to find out availability and book a place. We currently have some spaces available.

Contact us: For more information, please visit our website: [www.waterbeach-wasps.org.uk](http://www.waterbeach-wasps.org.uk). For Breakfast Club enquiries please contact [zoebadcockwasps@outlook.com](mailto:zoebadcockwasps@outlook.com) and for enquiries about After School or Holiday Club please contact [florrodrihofidalgowasps@outlook.com](mailto:florrodrihofidalgowasps@outlook.com). Telephone us on 01223 861140 during opening hours. Outside of opening times, please leave a message and a member of the team will return your call when convenient. If you would like to book a time to call in and meet the team prior to making a booking, please let us know.

## Neighbourhood Plan



The Waterbeach Neighbourhood Development Plan (NDP) is now at the draft policy writing stage. The themes and objectives which form the basis of the draft policies are now able to be shaped after several public consultations the latest being the Midway workshops and online survey undertaken during November 2018.

Once the draft NDP is complete there will be a public consultation period lasting for six weeks. We will be widely advertising this so please do have your say.

Eventually the plan will go to Inspection by an examiner. Once the Inspector approves the plan it will go to Referendum where community are invited to vote to approve or reject the final plan. If fifty percent of people vote in favour the plan will be “made”. This will give Waterbeach and Chittering villagers a legally binding document that sits alongside the Local Plan to help decide how the Parish of Waterbeach is shaped in the future.

We will at all stages be coming to you for your support and views. We will be at the Feast on the village green on Saturday 8<sup>th</sup> June so please come and say hello. We cannot do this without you.

The Waterbeach Neighbourhood Plan journey can be followed here on our website: <https://sites.google.com/view/waterbeach-neighbourhood-plan/home> or via the link on the Waterbeach Parish Council website.

You can also find us/contact us on Facebook and Twitter or email: [nadmin@waterbeach.org.uk](mailto:nadmin@waterbeach.org.uk) where you can request to be added to our mailing list to follow our progress or get involved.

# Beach Bowls Club

The new season is just about to begin and we look forward once more to playing in the various league and cup matches whilst also enjoying friendly games between club members. We have already had a roll up and members have played for the Henry Burling cup which is an annual event within the club. The winner this year was Viv Doughty. As many members as possible took part in what is always an enjoyable evening. Unfortunately, a couple of members have recently had operations from which they are now recovering and injury prevented two more from playing for the trophy. Hopefully all will be able to play again soon.

As usual an Open Afternoon has been arranged and hopefully some prospective new members will join us. The first league match will take place in early May and then games will take place regularly in both the Pairs and Triples Leagues. Details of forthcoming matches are displayed on the fence next to the green and spectators are welcome to watch the play. Regular roll ups will also be held. Again, do come along and watch.

Anyone wanting any information about the club please contact Terry Pauley on 01223 860600 or Chris Rushmer on 01223 861354. New members will be welcome.

# Waterbeach WI



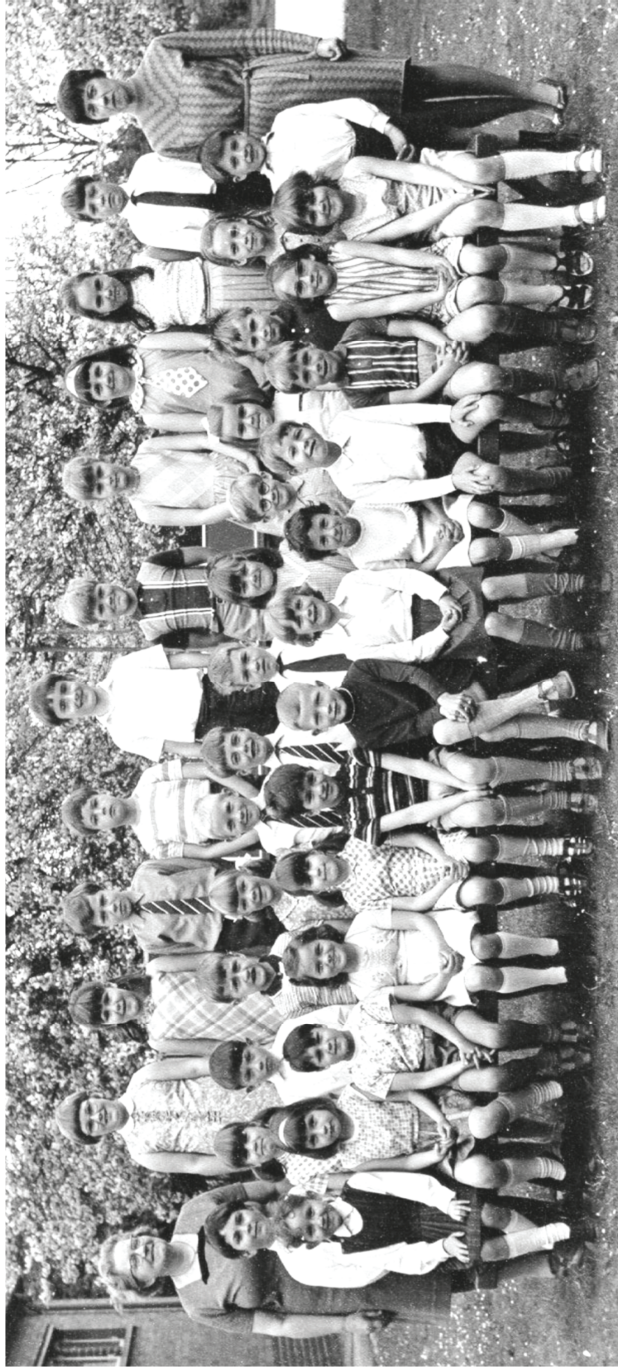
Our March meeting gave us a fascinating insight into what goes on inside our prisons and why we should care about the help prisoners get to reform. Sophie Ellis was an excellent speaker and she made us think. In April Terry Webb led a hands-on evening on the art of needle felting. Members produced an interesting array of decorative flowers.

It is CFWI's (the Cambridgeshire Federation's) centenary this year. The Annual Council meeting at Impington Village College was addressed movingly and inspirationally by Dame Floella Benjamin. She talked of her own challenging childhood in 1960's London, her time as a Playschool presenter and her tireless work in schools and Parliament to ensure children are 'loved' and have the education and support they need.

We have 41 members now and are a welcoming group of women with a diverse age range. Please come and visit any 2<sup>nd</sup> Thursday of the month at St John's Church Room at 7.30pm. See if it's for you. Jane Kennedy is talking about British Sign Language on Thursday 13<sup>th</sup> June and there is a Summer Social Event on 11<sup>th</sup> July. Please visit us on our stall on the Village Green on Feast Day to find out more.

# Waterbeach School 50 years ago

This photograph of Waterbeach Primary School was taken 50 years ago in the summer of 1969. Some of the class members have been named (apologies for any mistakes!), but perhaps you can correct the errors or fill in the gaps? Do you recognise yourself or maybe someone you know? Hopefully it will get you reminiscing and talking about days gone by. If anyone can assist with the names or has any stories to tell of times past in Waterbeach we would love to hear from you. Email [beachnews@waterbeach.org](mailto:beachnews@waterbeach.org) or other details on how to contact us can be found on the first page of this magazine.



*Back row:* Miss Hatley, Jacqueline Doggett, Sarah Wiles, ? Melvin Palmer, Paul Evans, ? Karen Bell, Cheryl Baines, Tricia Wyatt, Ian Lawrence, Miss Potter  
*Middle row:* Graham Chapman, Helen/Theresa ?, John Bavester, Michael Butler, Pamela Enfield, Andrew Eddy, Stuart French, Adrian Mortar, Hayley Burling, Mark Oliver, Catherine Uttridge, ? Ann Lovett, Terry Gilzean  
*Front row:* ? ? ? ? Helen/Theresa ?, Milton Crofts, James Ladbroke, Pat Heavens, ? Andrew Marshall, Adrian Howe, Fiona Kirkbride, Dawn House



# Beach Social Club

I am sorry that I missed the last issue, but that happens sometime, other things distracted me.

The Christmas and New Year was a very busy time. We had the kids Christmas Party and the Christmas Draw, (no I didn't win). Then we had the over 60's Party with another full house followed by a number of functions which were all well attended and of course quiz nights to raise funds for this year's charities; Addenbrookes Breast Cancer Appeal and Prostate Cancer UK.

We are now getting ready for Feast and hope to raise a good sum for our charities and beat last year's £531.

Then we will have our Annual Charity Auction to round up the charity fundraising and we would be very grateful for donations of just about anything that we can sell.

We still have some refurbishment to complete on the toilets and heating and that will leave us in good stead for the future.

We also held an indoor Boot Dale and Coffee Morning on May 12<sup>th</sup>. All to aid our charity fund.

Future Entertainment:

<i>June 1<sup>st</sup></i>	Back in Time Rock and Pop
<i>August 3<sup>rd</sup></i>	Lady Stardust Female vocalist
<i>August 31<sup>st</sup></i>	Harvest Festival Charity Auction
<i>Sept. 28<sup>th</sup></i>	Charity Presentation night with Texas Gun an excellent C+W band from Ayr
<i>October 25<sup>th</sup></i>	Halloween Party with Eclipse Disco for all the family and a prize for the best costume

Many other things are in the pipeline so check the club notice boards for info. Keep up to date with our Facebook page and notices around the village and in the Club.

The Club is fully air-conditioned and has free WiFi. The function room is available for hire to members of 12 months or more for parties/meetings etc, at very reasonable rates. We may also be able to accommodate local groups and organisations on an occasional or regular basis, daytime or evenings. The Surgery PPG uses the club for open meetings to give information covering various aspects of social care and St John's Church also use the lounge for talks on a variety of subjects.

Bingo, sessions continue to be popular every Monday evening from 7-9 with cash prizes and a Jackpot Flyer. Everyone is welcome to join us for these sessions provided they are 18+

New members are always welcome. Call in to collect an application form and have a look at our facilities, which include Pool table and Snooker/Darts/Crib teams. Large screen TV with Sky and BT Sport. There is a Beer Garden at the rear where you can take the kids and enjoy the lowest cost drinks in the area (probably).

Apart from our usual well stocked bar, we always have two real ales that we change weekly for other brands plus a specialist Gin and a Pimms bar.

*Geoff Donovan - Chairman*

# District Councillor Update

***Zero Carbon Communities grant scheme:*** At the time of writing, this scheme is yet to be approved by Cabinet (1<sup>st</sup> May) but I wanted to outline what it could mean to community organisations. The aim of the proposal is to provide funds for local groups to help reduce carbon emissions and our reliance on fossil fuels as part of our ambition to be a zero carbon council by 2050. If passed, community groups will be invited to bid for grants of between £1,000 and £15,000 to spend on projects large and small, be it energy saving improvements to community buildings such as insulation or installing solar panels, to planting trees, to providing an electric vehicle charging point for community use, or the simplest of proposals such as installing water fountains to encourage refilling of reusable water bottles and in turn helping to reduce our consumption of single use plastics. A total of just over £90,000 would be made available for the scheme for 2019/20, funded through business rates from renewable energy sites in South Cambridgeshire that are retained by the Council and earmarked for use in green initiatives. If approved, not for profit organisations and parish councils would be able to apply. Please watch this space for more information. Hopefully by the next time I write the scheme will be up and running.

***Waterbeach Community Forum:*** On 10<sup>th</sup> April there was a Drop-In session of the Community Forum which was a change from the usual format of a formal meeting. Residents were able to chat to and ask questions of various organisations all involved with the New Town who had stands at the event. They included Urban and Civic (the developers for the barracks side or Western section of the site), RLW (the Eastern side), Planners and Community Development Officers from South Cambs, Transport Planners from Cambridgeshire County Council, trustees from Denny Abbey and the Farmland Museum and last but not least, the Community Land Trust. As soon as I have a date for the next Community Forum I will update in Beach News.

***Landbeach Tithe Barn Trust:*** Back in February, listed building consent was granted followed by the signing of a lease with SCDC in March. Importantly,

The Tithe Barn Trust now has legal status and is able to apply to larger grant funds as part of its campaigning efforts. Hopefully the trust will soon be in a position to carry out the much needed repair works to this historic building.

**Home-link – new properties at Gibson Close:** As mentioned in my last update, the building of this development is carrying on apace. It is expected to be completed in September this year. To recap, along with open market housing, there will be six affordable rented homes – 4x1 bed flats and 2x2 bed houses with a further three two bed houses to be sold on a shared ownership basis. If you are interested in making a bid once these become available, make sure all your information is up to date on the system. Visit <https://www.home-link.org.uk>

If you wish to get in touch, contact me on either 07956 528223 or at [judithrippeth@gmail.com](mailto:judithrippeth@gmail.com)

*Cllr. Judith Rippeth*

## Our Vanishing History

So much of our village history exists only in the memories of our older residents. Sadly, when they pass away their memories and the wonderful stories they tell are lost forever. Over the years some of these stories have been published in Beach News, yet much is still in danger of being lost.

If you have memories of Waterbeach, Landbeach or Chittering from years gone by could you please share them with us? Don't worry about spelling or grammar, we can put that right if need be. Your contribution will be recorded and then may feature in future editions Beach News.

If you have any old photographs, prints, postcards, newspaper cuttings, catalogues, programmes etc. that we could share with our readers we would be delighted to hear from you. We would scan any material you have and of course return them. If you are able to help please Tel: 01223 476601, email: [beachnews@waterbeach.org](mailto:beachnews@waterbeach.org) or send to Beach News, 5 Spurgeons Avenue, Waterbeach, Cambridge, CB25 9NU.

## WATERBEACH YARD SALES

**6<sup>th</sup> July 2019 from 10am-4pm**

**Maps, refreshments and toilets available at  
St John's Church Room, Station Road - 10am-2pm**

***To take part send your name, address, phone number and £5 to  
9 Waddelow Road, Waterbeach or 3 Star Drive, Waterbeach  
by 28<sup>th</sup> June 2019***

**Raising funds for Waterbeach PTA and Waterbeach Beavers**



# Feast Past

We have recently been looking through past editions of Beach News and came across this Feast Day poem by Jack Harding, a former local resident. Feast Day this year is of course Saturday 8<sup>th</sup> June, but in 1975 when the poem was first published Feast Day was 24<sup>th</sup> May.



1920s

*O merry is the month of May  
And we'll be merry too  
For on the Green I'm pleased to say  
There's room for me and you.*

*There's room for all to come along  
From greatest to the least  
And join once more the happy throng  
And keep the village Feast*



2015



2001

*The sun we hope will warmly smile  
To fill our hearts with cheer  
Enabling us to chat awhile  
With friends of yesteryear*

*It all has been so nicely planned  
With all food things complete  
So may the music of the band  
Bestir our weary feet*



2008



1987

*There're bargains too on every stall  
Displayed for us to see  
And roundabouts and best of all  
The welcome cup to tea*



1992

*So keep a twinkly in your eye  
Forgetting every care  
Let flags and coloured bunting fly  
And laughter fill the air.*

*Written by Jack Harding 1975*



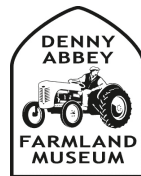
1977



1920s



# Farmland Museum



The Farmland Museum and Denny Abbey opened for the 2019 season at the start of April and we've already welcomed many Waterbeach residents. Our new Annual Pass tickets are great for local visitors – a single entry ticket allows repeat visits at no extra cost for 12 months (excluding a few special event days.) This means you can pop in whenever you like for coffee and a wander, bring the kids to play on the play area, or simply come to sit and enjoy the sunshine on this peaceful site.

We are open from 11am to 5pm, every Tuesday to Sunday and also on Bank Holiday Mondays. Our newly refurbished tea room is open weekends, Bank Holiday Mondays and during family activity afternoons in the school holidays. We serve a selection of cakes and snacks, along with hot and cold drinks. Ice creams are always available in our kiosk too!

We have some exciting events planned this summer that are always hugely popular with our visitors:

*Sunday 26<sup>th</sup> and Monday 27<sup>th</sup> May - 1940s Living History Weekend*

Experience life in the 1940s at this spectacular annual Farmland Museum and Denny Abbey event. Mingle with Second World War costumed re-enactors camping on site, weigh out food rations in the village shop and have a go at make-do-and-mend clothes.

*Thursday 25<sup>th</sup> July - Festival of Archaeology: Children's Event*

Be an archaeologist for the day as part of the national Festival of Archaeology. Do a mini-dig, have a go at reconstructing a pot and explore our collection of historic artefacts found around the site.

*Sunday 25<sup>th</sup> and Monday 26<sup>th</sup> August - Denny Time Machine*

The Harrington Household medieval re-enactors set up camp at Denny Abbey to show crafts and weapons in costume. Lots to see and do for all the family!

We also run family craft activity afternoons every Wednesday and Thursday in the school holidays from 1pm to 4pm.

More details on the museum and our events can be found at [www.farmlandmuseum.org.uk](http://www.farmlandmuseum.org.uk).

If you like the sound of what the museum has to offer and could volunteer your skills to help us preserve the history of rural Cambridgeshire for future generations, we would love to hear from you. You can be sure of a friendly welcome, good company and plenty of tea and biscuits! Do get in touch with us at 01223 860988 or by email to [info@farmlandmuseum.org.uk](mailto:info@farmlandmuseum.org.uk) or simply say hello to a member of the team on your visit.



# Cambridgeshire Hearing Help

Founded in 1978 under the name of Cambridge CAMTAD (Campaign for Tackling Acquired Deafness), Cambridgeshire Hearing Help supports people with hearing loss to maintain their independence and wellbeing, particularly those who face barriers accessing mainstream audiology services. Our services include:



*43 NHS hearing aid maintenance community drop-in sessions across the county* - At these sessions we will clean and re-tube your NHS hearing aids, supply you with NHS hearing aid batteries, and offer information/advice about hearing loss. All you need to do is find out what days and times your local sessions run and drop-in. You do not need to make an appointment.

Drop-in sessions near Waterbeach:

<b>Village</b>	<b>Drop-in address</b>	<b>Day/time of drop-in</b>
Cottenham	Community Centre, 250A High Street, Cottenham, CB24 8RZ	2 <sup>nd</sup> Thursday of each month, 2pm to 4pm
Milton	Milton Surgery, Coles Road, Milton, CB24 6BL	1 <sup>st</sup> Thursday of every month, 2pm to 4pm
Girton	Baptist Church, 103 High Street, Girton, CB3 0QQ	3 <sup>rd</sup> Wednesday of every month, 2pm to 4pm
Bottisham	Bottisham Medical Practice, Tunbridge Lane, Bottisham, CB25 9DU	2 <sup>nd</sup> Tuesday of every month, 1pm to 2.30pm
Burwell	Burwell Day Centre, Ash Grove, Parsonage Lane, Burwell, CB25 0EN	3 <sup>rd</sup> Tuesday of every month, 9.15am to 11.45am

*Home/residential home NHS hearing aid maintenance visits for those who are housebound* - If you are housebound, we can clean and re-tube your NHS hearing aids, supply you with NHS hearing aid batteries, and offer information/advice about hearing loss, in your own home. Please contact us to arrange a visit.

*Enjoyable and rewarding volunteering roles*

- Are you looking for an enjoyable volunteering role through which you can meet others, feel part of a supportive team (many of whom have shared experience of hearing loss) and help people with hearing loss? Our charity is dependent on a large team of 115+ volunteers. Please do get in touch with us if you are interested!



Visit our website: [www.cambridgeshirehearinghelp.org.uk](http://www.cambridgeshirehearinghelp.org.uk) or contact us directly to find out more: Tel: 01223 416141 Text: 07852 699196 Email: [enquiries@cambridgeshirehearinghelp.org.uk](mailto:enquiries@cambridgeshirehearinghelp.org.uk)

Office opening hours: Mon to Fri, 9.30am to 1.30pm (closed bank holidays)

# Military Heritage Museum



The Museum reopened for the 2019 season in March and has had a very satisfying number of visitors in the first two months. In 2018 we saw seven hundred and fifty visitors which was an increase on 2017. As news gets around, we hope to increase visitors each year. Quite a few visitors come from overseas.

As a reminder we are open 10am to 4pm on the first Wednesday and Sunday of the month between March and October with a special opening on the afternoon of Remembrance Sunday. We shall also be open on Feast Day afternoon 8<sup>th</sup> June and the three weekends Saturdays and Sundays of the Art Open Studios in July see posters and publicity.

Over the last two years Museum Trustee and former Commander at

Waterbeach, Col. Retd. David Adamson has been writing the history of Royal Engineers at Waterbeach from 1966 to the Barracks closing in 2013, assisted by a small editorial team. This is a companion book to 'At The Beach' which is largely about the RAF's occupation of the Airfield and Barracks from 1941 to 1966.

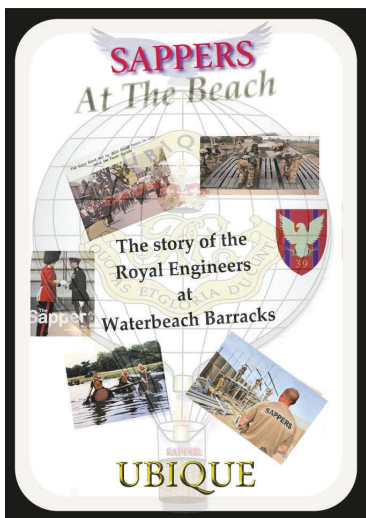
Our new publication is at the printers and should be on sale from the museum by the time the Beach News comes out. It will also be available by post. We hope you will stop by and get your copy and enjoy this new publication, written by the people who were there. There are pictures and anecdotes by former serving members of 39 Engineer Regiment as well as the history of their stay in

Waterbeach. The Museum is delighted Urban & Civic have generously supported the cost of printing the book which will retail £10; P & P extra if ordered by post.

The Museum is also developing a Friends membership to help support the museum financially. Membership is only £12 a year and forms can be obtained from the museum and if you can also Gift Aid so much the better! We exist on your donations, sales of books and cards. Our biggest expense is the insurance which we must have of course.

The Museum is proud to have its full complement of Trustees and a group of volunteers. If you think you can help in any way or have photos or artefacts of the Barracks and Airfield of service with the various units RAF and RE we would love to receive them.

*Adrian Wright - WMHM Chairman*



# Amey Waterbeach

Amey delivers a range of waste services from its 400-acre Waterbeach Waste Management Park, off the A10. Amey's partnership with Cambridgeshire County Council has seen a significant investment in the site over the last decade, helping to increase recycling, make the most of leftover waste and reduce the overall amount of waste that is landfilled.

Our Waterbeach Waste Management Park is home to a state-of-the-art materials recycling facility (MRF), which can process mixed recyclable materials from households and businesses.

The facility, which opened in December 2012, can process 100,000 tonnes of material each year. It contains a range of sorting equipment and machines which separate materials including plastics, cardboard, metals and paper. Once separated, the different items can then be baled up on site and sent for recycling.

We also have an Education Centre on site, giving schools, community groups, businesses and residents an opportunity to learn more about what happens to the things they throw away and how they can play their part in reducing the rubbish we all create and recycling more - at home, at work, at school and on the go.

## ***What happens to your leftover waste?***

To reduce waste going to landfill, all of Cambridgeshire's 'black bag' household waste is taken to Amey's 'Mechanical Biological Treatment' (MBT) facility, where items are extracted by machines for recycling and other uses, before the remainder is made into a compost-like material. This reduces greenhouse gas emissions compared to sending the waste straight to landfill and saves money as landfill is becoming more and more expensive.

The county's kitchen and garden waste is taken to our site to be composted. The in-vessel composting process allows us to compost garden trimmings, fruit, vegetable, meat and fish waste. Within six to eight weeks a soil conditioner is produced that complies with EU standards and is used by local farmers, allotment societies and the public. This soil conditioner can be collected in bulk (free of charge) from Waterbeach Waste Management Park.

In the long term, we want to further reduce landfill by constructing an Energy from Waste (EfW) facility, and we are currently appealing the county council's decision to refuse permission. The facility would create enough electricity to power around 60,000 homes, and could support a district heating scheme for 10,000 new homes proposed to be built near the Waste Management Park. Energy from Waste would divert waste from landfill and, as a result, would significantly reduce Methane emissions from the site. Energy from



Waste at Waterbeach also makes sense because of the co-location with the rest of the facility; any other option means more lorry movements, having a negative impact on Cambridgeshire's roads and increasing harmful emissions – which goes against the whole object of creating a green energy solution.

### ***What can residents and businesses do?***

We can all help to reduce waste by considering what we buy and using less single use items, reuse things such as cups or items that have been repaired or refurbished, recycle more and buy products with recycled content (everything from paper to clothes!), compost at home or use the soil conditioner made at the Waterbeach site.

You can find out more about the 4Rs of waste- reduce, reuse, recycle, recover - on our website: <https://wasteservices.amey.co.uk/where-we-work/cambridgeshire/>.

## **Wag Your Tails!**

The village fun dog show is back again for the 4<sup>th</sup> year. Always a cracking day of paw-tastic family fun, trophies and rosettes galore, and all in aid of some great local charities.

*When:* Saturday 15<sup>th</sup> June on the Waterbeach Recreation Ground.

*Classes:* 11am to 4pm (entries from 10am).

By popular request, this year there will again be two rings to keep things moving quickly and give everyone more



chances of ribbons and prizes. So, whether you have a pooch that can do one trick or a bundle, a jumpy-uppy crazy puppy or a laid back know it all old faithful, a matching pair of handsome hounds or the oddest pair in the village, they are all welcome to come and enjoy a day dedicated to woofs. You don't even have to have a dog to enjoy the day.

Hog roast, stalls, refreshments, fun activities, scurry, raffle, and prizes galore.

All in the aid of raising money for Waterbeach Colts U5s, Retired Greyhound Trust and Poplar Farm Rescue Kennels.

For more information visit our face book page (Waterbeach Fun Dog Show) or contact Wendy on 01733 702524 or Jude on 01223 441599

# Waterbeach Colts FC



The 16<sup>th</sup> Annual Waterbeach Colts Football Tournament and Beer Festival is nearly upon us and will take place this year on 24<sup>th</sup>, 25<sup>th</sup> and 26<sup>th</sup> May.

All are warmly welcomed to come over to Waterbeach Recreation Ground to enjoy the weekend:

- **Friday 24<sup>th</sup> May** - Beer festival opens 6pm to 11pm. Later in the evening live music from Waterbeach's talented The Juliets plus Special Guests.
- **Saturday 25<sup>th</sup> May** - The Football Tournament runs all day from 9am, when girls and boys between the ages of 5 and 16 will play and compete with teams from across the county.
- The beer festival will be open **Saturday 25<sup>th</sup> May**, 1pm to 11pm, and **Sunday 26<sup>th</sup> May**, 12 noon to 9pm. We have a licence for drinking in the designated area of the beer festival, so that we can keep the football tournament separate from the beer.
- Saturday evening come and enjoy a drink and there will be a disco from 8pm.
- On Sunday morning/early afternoon, Waterbeach Cricket Club are holding net sessions – open to all.
- On Sunday afternoon from 2pm onwards there will be live music from a wide range of local bands and performers for you to enjoy.

The weekend is for all ages and is family-friendly. Refreshments will be available, and a huge thank you to the Scouts for once again volunteering their time to provide a BBQ from Friday evening all the way through to Sunday evening! Other food will also be available.

If you are interested in providing sponsorship or being involved in any way, please contact Elly Ruston, 07986 340 869 / [elly@ruston.eu](mailto:elly@ruston.eu)

## Poor Mobile Signal

### ***MP Takes Up Poor Mobile Signal Issue with Providers***

MP Lucy Frazer is meeting with mobile signal providers in Waterbeach to address our poor signal issues. The first of these meetings took place, last month, with provider Three. They acknowledged the problems and will be checking their mast in Waterbeach to see if they can make any improvements. They also agreed to consider what else could be done to enable a better signal in the future. Further meetings are being scheduled with EE, Vodafone and O2. Lucy has asked if anyone experiencing mobile signal problems could email her at [lucy.frazer.mp@parliament.uk](mailto:lucy.frazer.mp@parliament.uk) with details of specific locations where the signal appears to be most problematic. This will help inform her discussions with the various suppliers with a view to speeding up the process of establishing the problems and putting solutions in place.

# Tithe Barn Trust

The Tithe Barn Trust is delighted to announce that we have now signed the 99 year lease of the unique Grade II Listed Tithe Barn in Landbeach. Gemma O'Shea, Chair of Trustees, said "Securing the lease is a giant step forward for the Trust, enabling us to submit grant applications which, without a lease, we simply wouldn't have met funding conditions and criteria for. The Trust is a small charity and not-for profit volunteer group and our local community is incredibly supportive. People have made generous donations and attended fundraising events such as community cinema and theatre. We are grateful for the invaluable pro bono legal advice from Eversheds Sutherland enabling us to secure the lease. Sadly, the Tithe Barn needs urgent repair works, and unless we act now we could lose this treasure. So, we welcome others to get involved in the project by becoming a friend, donating, volunteering, or coming along to one of our events."

*Tithe Barn Theatre* - Thursday 20<sup>th</sup> June, 6pm

The Cambridge School of Visual and Performing Arts will be returning to the Tithe Barn to perform Shakespeare's comedy 'Much Ado about Nothing'. Refreshments available.

*Fen Edge Festival Open Days* - Sat 22<sup>nd</sup> & Sun 23<sup>rd</sup> Jun, 1pm-5pm

We'll be opening the Tithe Barn as part of the Fen Edge Festival for your enjoyment.

*Tithe Barn Talk* - Saturday 6<sup>th</sup> July, 2pm

Join Dr Adam Menuge, from the University of Cambridge, as he gives an account of the Landbeach Tithe Barn and its development, in the wider context of vernacular farm buildings.

*Heritage Open Day* - Saturday 14<sup>th</sup> September, 1pm-5pm

See the unique Grade II Listed timber frame Tithe Barn for yourself.

Admission to all of our events is FREE, but donations are of course welcome towards the restoration of the Tithe Barn. Thank you for your support.

Visit [www.tithebarntrust.org.uk](http://www.tithebarntrust.org.uk) to find out more about the Tithe Barn Trust and our events.

The Tithe Barn Trust believes the medieval Tithe barn, with thatched roof, brick threshing floor and timber granary, to be unique to Cambridgeshire and even of national significance. It is one of the few Tithe Barns in the country still standing next to its medieval rectory. Sadly, the Landbeach Tithe Barn is in a poor condition and deteriorating. You can make a donation today at <https://www.totalgiving.co.uk/mypage/TitheBarnTrust>

**How to find the Tithe Barn** - Gate entrance is opposite No 2 Waterbeach Road, Landbeach, Cambridge, CB25 9FA.



# Fen Edge Festival



This year's Fen Edge Festival is nearly here and this year's Carnival theme promises a great programme for everyone to enjoy from 21<sup>st</sup> to 23<sup>rd</sup> of June on Cottenham Village Green and the Village College and Community Centre.

This is the eighth Festival and every time it is held it brings out the best in people. The Festival committee who have worked for nearly a year to pull the event together. The volunteer stewards who give their time to ensure that others can enjoy the event safely. The organisations and businesses that donate generously in recognition of their role in the community. The best way to show your support for their contributions and hard work is to get involved yourself as a volunteer ([volunteer@fenedgefestival.co.uk](mailto:volunteer@fenedgefestival.co.uk)). If you can't volunteer then please make sure you come along and support the event as you will be supporting charities and good causes in the five Fen Edge villages.

The Festival starts on Friday morning with Cottenham Toy Library's *Play Zone*. In the afternoon the focus switches to the older members of the community with *Tea on the Green*. And on Friday evening the ever-popular Cottenham Primary School PTCA Dance takes centre stage with local band *Swagger*, who gave an energetic and memorable performance at the last Festival. Tickets for the Dance are available from Cottenham Primary School, Cottenham Village College and Les Ward Greengrocers – check the FECA website and Facebook page for full details of all events.



Over the weekend we invite you to bring your friends and family, chairs and rugs to enjoy the free entertainment on the Village Green. There will be a great choice of food on offer from over a dozen food vans and stalls, a wonderful mix of market stalls and activities and live demonstrations from local village groups who will entertain you alongside sporting and dancing demonstrations.



There's free music in the evenings. On Saturday you can party with *The Hares* a fantastic 4-piece band who perform classic, modern and current covers to ensure the dance floor is rocking. On Sunday evening *Sandy Ukelele Group* promise fun - in bucket loads. Their gigs are more like a Karaoke concert as they encourage and expect their audiences to sing along! There's also another fantastic programme of free live music during the day at *The Venue* with talented local bands and musical performances to entertain you alongside our afternoon bar.

There will be lots of fun things for children to enjoy with favourites old and new including fairground rides, Total Wipeout (will you be the last person standing), games, entertainers, a fantastic Kids Disco plus some great surprises. There will also be the ever-popular sculpture competition.

At the Community Centre enjoy coffee, lunches and cream teas whilst listening to a variety of live, light music on Saturday and Sunday. Entertainment for children will include Toy Library Soft Play and Little Humbugs singing for pre-school children amongst other family activities.

Over at the Village College Sports Centre there's a Fitness Suite Open Day with a special induction fee of £2 for use of the gym over the weekend. If games are your thing there's a chance to play Tennis, Badminton, Table Tennis and Football.

The full Festival programme will be delivered to homes at the start of June so look out for it and keep it to hand for the Festival weekend. For the latest news and information follow us on Facebook, Twitter and Instagram or visit the [fenedge.co.uk](http://fenedge.co.uk) website

*The Fen Edge Festival wouldn't be possible without the generous support of our sponsors: Malarly Ltd, Cottenham Parish Council, Aviva Community Fund, Clear Glass (Cambridge) Ltd, Curry Palace, Lynx Autocare, S R Harradine Haulage Ltd, Giuseppe Piran, Gas Monster, Excelcare, haart, Bellway, Cambridge Glassblowing Ltd, Voland Roofing, Dentons Carpets, Polarglaze, Screens & Graphics and Amey.*

## **Bufs (Royal Antediluvian Order of Buffaloes)**



The Buffaloes once had a group that met in the White Horse, Waterbeach and these Bufs were known as the Victory Lodge. Unfortunately numbers decreased and they had to join the Guildhall Lodge in Cambridge. Some of the original 'Victory' members still attend today, but once again numbers are falling and we are looking for new members.

Buffaloes meet every week at lodges all over the country and raise money for charities. If you are male of good character and can spare a couple of hours each week then you are just the person we are looking for. The Guildhall Lodge meet every Monday at 8pm at the Ex-Services Club, Barnwell Drive, Cambridge, CB5 8RD. Help your local community and the less fortunate, come and meet us for an informal commitment free chat. For more information contact 01223 501383.

# Cambridge Open Studios



## ***Region's largest art event set to return this July***

Cambridge Open Studios has announced the 2019 dates for its month-long summer art event, which will feature an exciting range of exhibitions by over 350 artists at 222 locations in the city and surrounding areas. This year there will be 95 new members taking part in the region.

Artists will open their doors to the public over four weekends in July. Among the huge range of specialisms will be: fine art, photography, pottery, glass making, sculpture, illustration, textiles, jewellery and furniture making, and more besides. The weekends are: July 6/7, 13/14, 20/21 and 27/28. Studios are open to visit between 11am and 6pm. However, as not all artists will exhibit every weekend it is important to check the website, or refer to the famous yellow guide. These guides will be widely available in local outlets including libraries, tourist information sites,



galleries and selected shops.

## ***There's an app for that***

Cambridge Open Studios now has an app to help visitors find exactly what they are looking for and plan their days out. You can search by the artist's name, medium (painting, pottery, glass etc.), and location. There's also a button that suggests studios to visit nearby. So it's easy to find exactly the kinds of work you want to see and to work out a route around a particular area. The app will be available to download by mid-June for Apple and Android. Marion Curtis, board member of Cambridge Open Studios, said: "This is a fantastic opportunity for members of the public to see artists at work in their studios, discuss their inspirations and techniques, and to browse, purchase or even commission their work."



"We're hoping even more members of the public will download our ingenious phone app that allows visitors to find any workshops to suit their tastes and location. It couldn't be easier to make a day of visiting a selection of studios. "As always, visitors are guaranteed a warm and friendly welcome at all the studios - and no pressure whatsoever to buy anything. All Cambridge Open Studios are completely free to visitors of all ages."

## ***Find out more online***

The studios are spread throughout the whole region, not just in the city centre. As usual, the distinctive yellow COS flags will be out to identify participating studios.

In the months leading up to the open studio event, many artists will be running workshops, courses and exhibitions. Members of the public can keep up to date on their activities via the COS website ([www.camopenstudios.co.uk](http://www.camopenstudios.co.uk)) or by following them on Facebook, Twitter and Instagram using @CamOpenStudios.

# Fire and Rescue Service



## ***Could you be our next Community Champion?***

We're looking for volunteers to join our team of community champions across Cambridgeshire and Peterborough.

As part of their voluntary activities, community champions support and participate in local initiatives and campaigns, helping to spread the word to local communities about keeping safe. They make a huge contribution to the Service and help work towards the vision for a safe community where there are no preventable deaths or injuries in fires or other emergencies.

Champions cover everything from fire safety in the home, to road and water safety, including:

- Attending local events – Representing CFRS at events, such as school fetes, school presentations and community festivals.
- Community fire station open days – Helping out at events and sharing safety advice.
- Fire station car washes – Helping out and sharing safety advice.
- Community fire safety campaigns – Targeted activities to coincide with safety themes, such as electrical appliance safety and cooking safety.
- Taking part in large-scale joint training exercises - Volunteers can act as injured casualties/concerned bystanders, helping to make training scenarios as realistic as possible.
- Community consultation - Taking part in focus groups during consultation with communities.

Community champions receive training as part of the role to help develop their skills. The opportunity also gives volunteers the opportunity to enhance their CVs, make new friends and improve their knowledge of the work undertaken by CFRS. No previous qualifications or specific skills are needed to become a community champion and CFRS is always seeking people from diverse backgrounds.

It's a rewarding role, and one that you can give as much or as little time as you can.

If you would like to find out more about the role of a community champion visit [www.cambsfire.gov.uk](http://www.cambsfire.gov.uk).

## COMMUNITY ASSOCIATION MEMBERS

1 <sup>ST</sup> WATERBEACH BROWNIES	Tiffany Langton - 07846 961255
2 <sup>ND</sup> WATERBEACH BROWNIES	Penny Clay – 07915 046483
1 <sup>ST</sup> WATERBEACH GUIDES	Holli Bielby - 07779 408588
1 <sup>ST</sup> WATERBEACH RAINBOWS	June Stephen - 07956 949964
32 <sup>ND</sup> CAMBRIDGE (WATERBEACH) SCOUT GROUP	William Moon - 01223 440259
BEACH BALLS (WATERBEACH JUGGLING CLUB)	Liam Guyton - 07726 603763
BEACH BOWLS CLUB	Bill Clough - 01223 861386
BEACH SOCIAL CLUB	Geoff Donovan - 01223 571329
COMMUNITY ASSOCIATION CHAIRPERSON	Jacqui Rabbett - 01223 860993
COMMUNITY ASSOCIATION SECRETARY	Pam Clack - 01223 476601
FRIENDS OF WORTS MEADOW LANDBEACH	Robert Humphrey - 01223 863454
HAPPY FOLKS CLUB	Stuart Atkins - 01223 862674
ROYAL BRITISH LEGION - WATERBEACH & LANDBEACH	Norman Foster - 01223 474622
ST. JOHN'S CHURCH	Rev. Paul Butler - 07903 904599
ST. JOHN'S WATERBEACH WIVES	Sheila Gill - 01223 861999
WASPS (WATERBEACH AFTER SCHOOL PLAY SCHEME)	Zoe Badcock - 01223 861140
WATERBEACH & DISTRICT GARDENING CLUB	Jerry Cooper - 01223 574050
WATERBEACH ANGLING CLUB	Colin Brett - 01954 200956
WATERBEACH BADMINTON CLUB	Norman Setchell - 01223 862404
WATERBEACH BAPTIST CHAPEL	Martin Ensell - 01223 862494
WATERBEACH BRASS	David Pell - 01223 860396
WATERBEACH COLTS F.C.	Tara Saunders - 07841 642004
WATERBEACH COMMUNITY LAND TRUST	Ian Bracey - info@waterbeachclt.co.uk
WATERBEACH COMMUNITY PLAYGROUP	Jacqui Woods - 01223 440769
WATERBEACH DAY CENTRE FOR THE ELDERLY	Mary Longstaff - 01223 564666
WATERBEACH INDEPENDENT LENDING LIBRARY (WILL)	Maggie Crane - 01223 440560
WATERBEACH MILITARY HERITAGE MUSEUM	Adrian Wright - 01223 861846
WATERBEACH PARISH COUNCIL	Parish Clerk - 01223 441338
WATERBEACH SALVATION ARMY	Captain Carol Baker - 01223 506217
WATERBEACH SCHOOL P.T.A	Clare McDonald - 01223 718988
WATERBEACH THEATRE COMPANY	Julie Petrucci - 01223 880023
WATERBEACH TODDLER PLAYGROUP	Wayne Badcock - 07808 357729
WATERBEACH VILLAGE SOCIETY	Adrian Wright - 01223 861846
WATERBEACH WI	Sheila Lynn - 01223 860948
WAY PROJECT (WATERBEACH & LANDBEACH ACTION FOR YOUTH)	Caroline Ward - 07749 738870
WOODLAND TRUST - COW HOLLOW WOOD	Adrian Wright - 01223 861846

### Other useful numbers:

BEACHES COMMUNITY CAR SERVICE	07807 875878
COMMUNITY WARDEN	07977 219403
DISTRICT COUNCILLOR	Judith Rippeth - 07956 528223
DOCTORS SURGERY – WATERBEACH	01223 860387
FIRE & RESCUE SERVICE - Non Emergency Calls	0800 9179994
LANDBEACH VILLAGE HALL	Anne Bullman - 01223 860692
PARISH PATHS GROUP	D. Armstrong - 01223 861586
POLICE - Non Emergency Calls	101
ST LAWRENCES CATHOLIC CHURCH	01223 704640
VILLAGE CORRESPONDENT	Maggie Crane - 01223 440560
WATERBEACH PARISH COUNCIL	Parish Clerk - 01223 441338
WATERBEACH SCHOOL	01223 718988
WATERBEACH TURBARY CHARITY	Pam Gooding - 01223 861003
WATERBEACH UNITED CHARITIES	Pam Gooding - 01223 861003



# Waterbeach Barracks and Airfield

52.2656° N, 0.12910° E

The former barracks and airfield at Waterbeach offer a range of community facilities for local groups including:

- Sports Hall
- Studio area
- Tennis Courts
- Squash courts
- Community rooms

## Military Heritage Museum

Open from 11am to 4pm on the first Wednesday and Sunday of each month, March to October, and by appointment with Adrian Wright (01223 861846).

## Find out more

Urban&Civic hold regular events to keep you informed and give you the opportunity to shape the future development of this special place. If you or your local group would like to find out more, meet us for a coffee and have a tour of the site, contact Rebecca Britton on 07739 339 889 or email us: [rbritton@urbanandcivic.com](mailto:rbritton@urbanandcivic.com)



Urban&Civic

[waterbeachbarracks.co.uk](http://waterbeachbarracks.co.uk)

Be Curious. Explore. Learn. Grow



# Little Stars

Day Nursery

Leading the way to brighter futures

 Little Stars Day Nursery

Buchanan Centre

Capper Road

Waterbeach

CB25 9LY



01223 861911